



exe**LEARNING**  
AUTHORING

## Braving the SCORM with eXe

---

Our quest to develop a flexible authoring tool for  
pedagogically reusable content

[www.exelearning.org](http://www.exelearning.org)

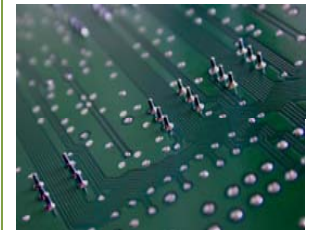
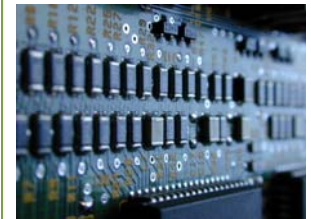




# Aims of the eXe project

To develop an authoring tool for e-learning content that is easy for “non-technical” users to use

To explore open source development models and strategies for education





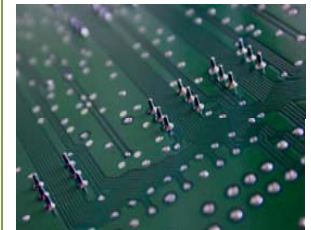
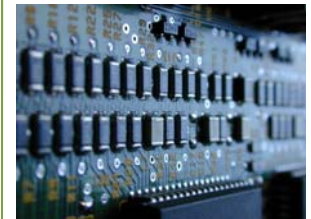
# About eXe

## ● Content Authoring Tool

for publishing multi-media, web content designed for learning without the need for users to become proficient in (X)HTML

## ● Features

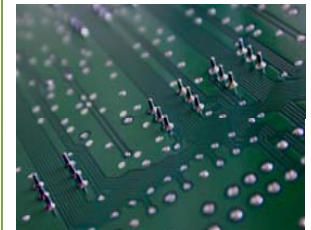
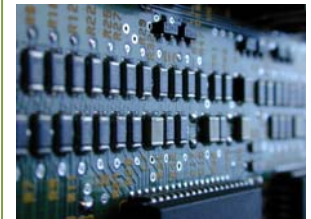
- Pedagogy is prioritised above technology
- Fills a strategic gap in the suite of e-learning technologies
- Open source software development
- Inspired by the ELF to be LMS independent
- Web-based, offline technology (authoring & delivery)
- Empowers teachers to overcome the constraints of CMS
- Provides contextual pedagogical advice and support





# Open source software

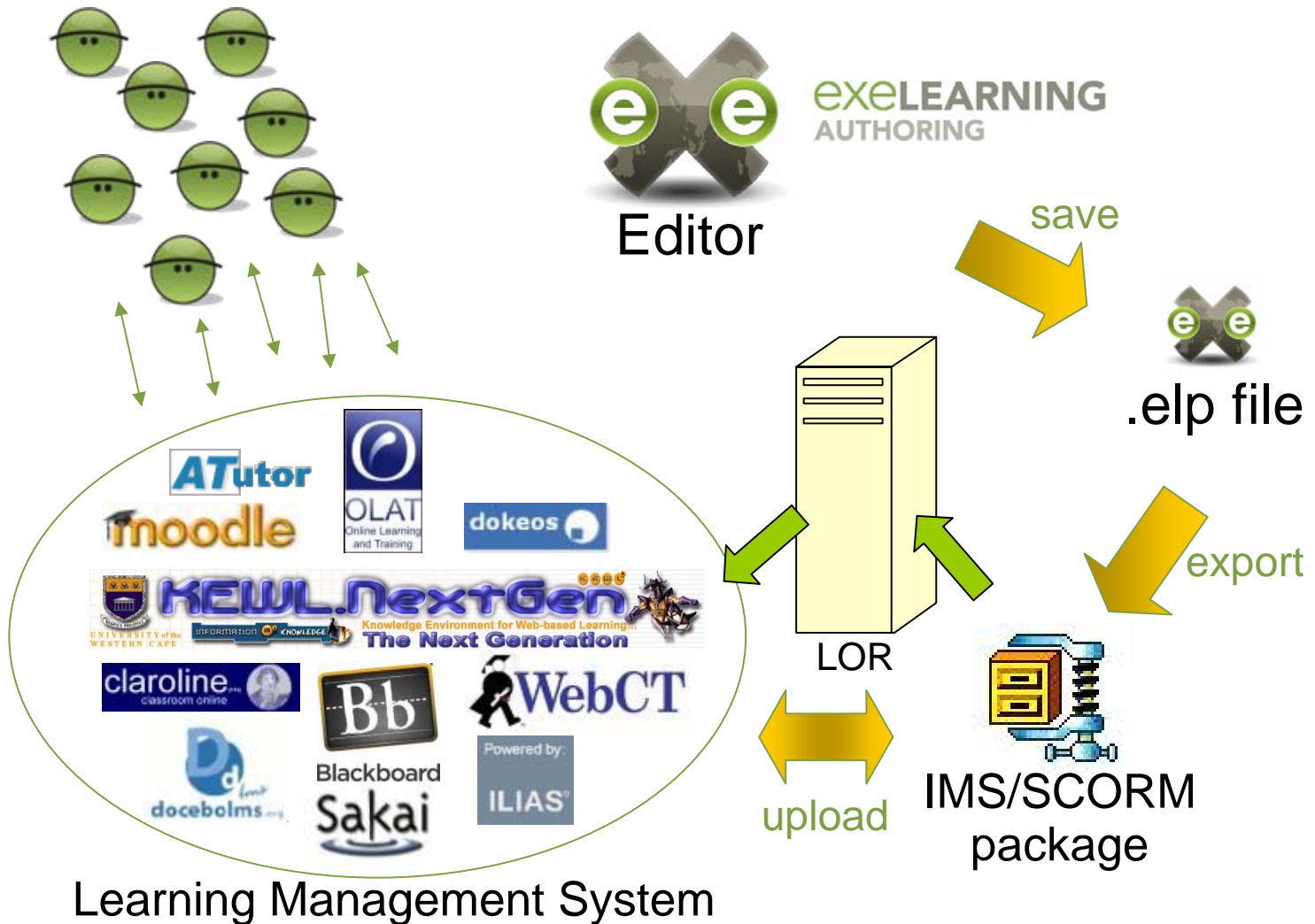
- “Copyleft” licence enables free & unencumbered access to use the compiled software
- Provides free and open access to the source code
- The OSS model removes potential barriers for collaboration in realising the vision for eXe



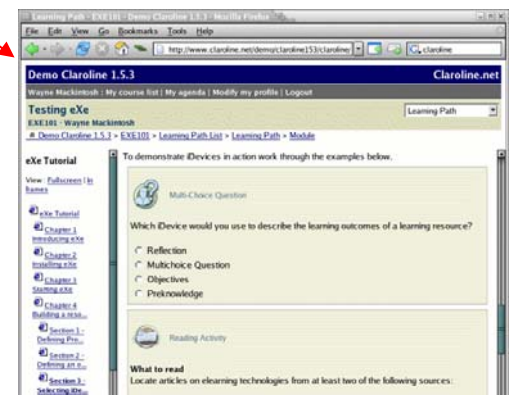
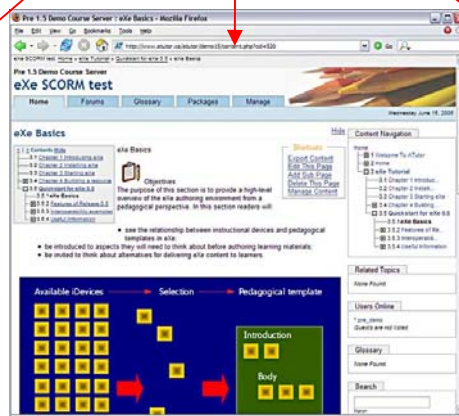
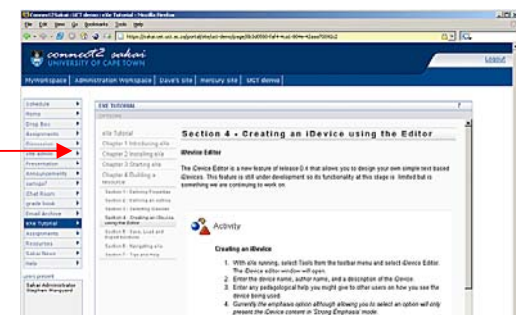
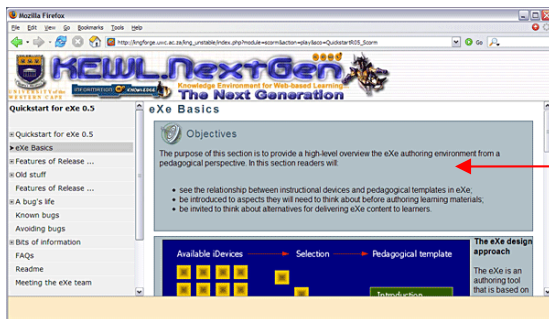
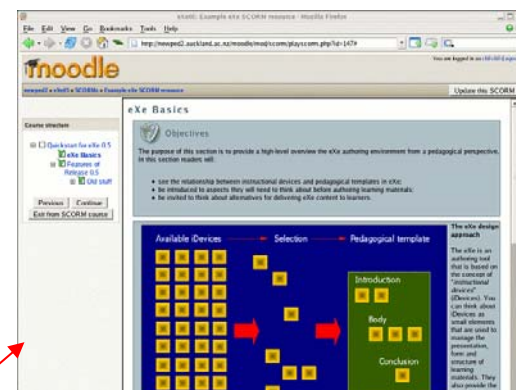
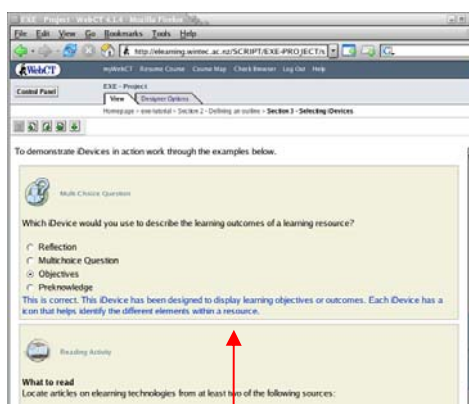
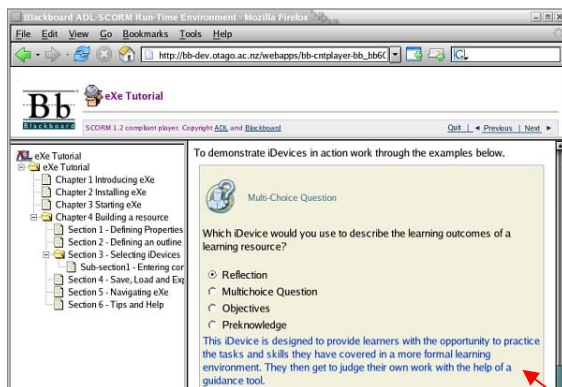


# eXe is a authoring tool – NOT an LMS

But we talk with LMSs through IMS/SCORM content packages

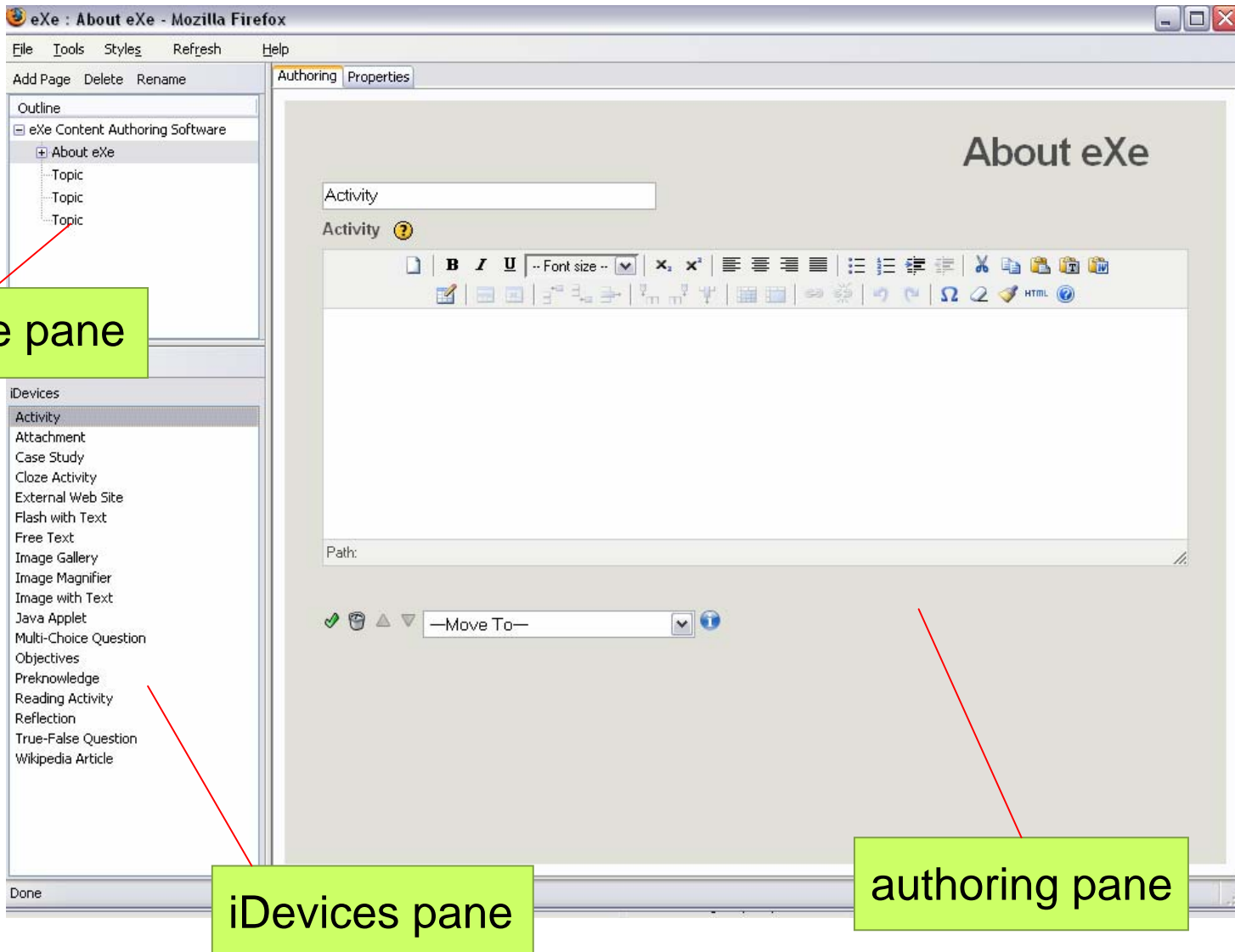








# eXe Interface



Outline pane

iDevices pane

authoring pane



# eXe Interface

The screenshot shows the eXe version 0.7 interface. The window title is "eXe version 0.7". The menu bar includes "File", "Tools", "Styles", "View", and "Help". Below the menu bar, there are tabs for "Authoring" and "Properties". The left sidebar contains a tree view with "Outline" (Home, Topic) and a list of "iDevices" (Activity, Attachment, Case Study, Free Text, Image Gallery, Image with Text, Multi-Choice Question, Objectives, Preknowledge, Reading Activity, Reflection, True-False Question, Wikipedia Article). The main area displays the "Home" page with a "Objectives" section containing placeholder text. Below this is an "Image Gallery" section with a "add images" button and three image thumbnails. A "Purpose" dialog box is open, explaining the purpose of the Idevice and providing a tip. A red line points from the "Move To" dropdown menu to a green box labeled "Pedagogical help".

eXe version 0.7

File Tools Styles View Help

Add Page Delete Rename

Outline

- Home
  - Topic

iDevices

- Activity
- Attachment
- Case Study
- Free Text
- Image Gallery
- Image with Text
- Multi-Choice Question
- Objectives
- Preknowledge
- Reading Activity
- Reflection
- True-False Question
- Wikipedia Article

Home

Objectives

Vivamus tincidunt. Integer libero. Ut aliquet nisl nec erat.

Duis mauris diam, volutpat non, porta quis, imperdiet in, lectus. Suspendisse potenti. Vestibulum porttitor venenatis tellus. Duis fringilla diam ac lectus.

Image Gallery

add images

Purpose

This Idevice exists to show a group of images in an easily understandable way. For example to show many different sample solutions in the form of images

**Tip:**  
Use this Idevice if you have a lot of images to show.

--Move To--

Pedagogical help





# An important distinction

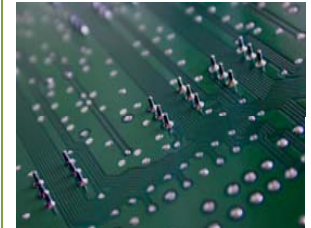
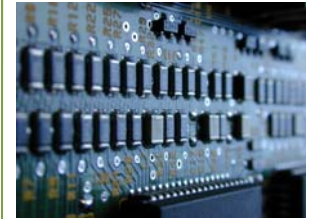
## ● Interoperability

Concerns a technological challenge whereby e-learning resources generated by one technology can readily be imported, adapted and presented using another technology



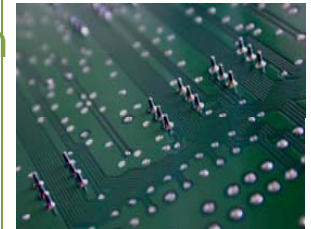
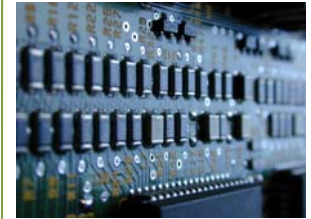
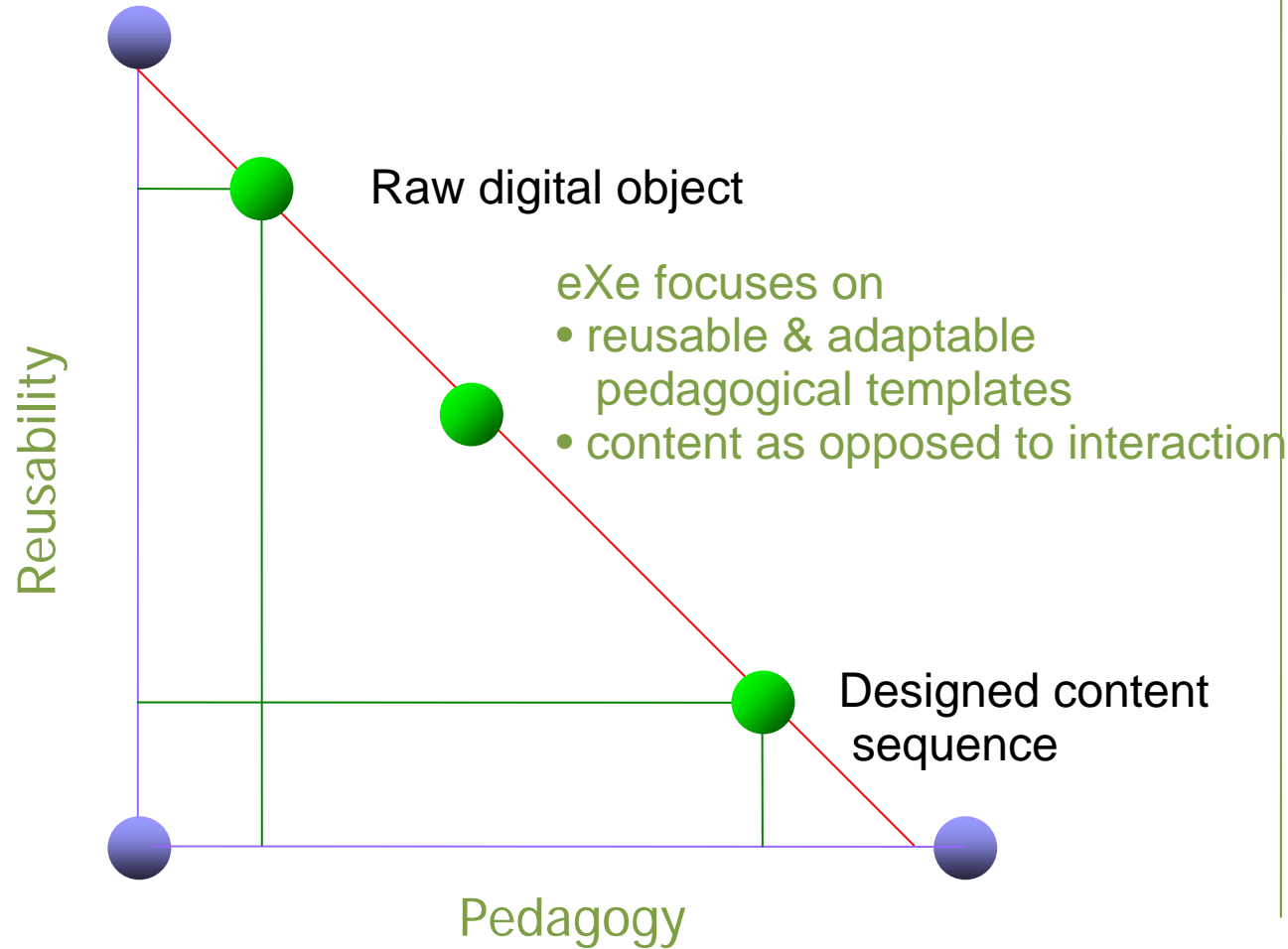
## ● Reusability

Concerns a pedagogical challenge whereby e-learning resources developed for one learning context can readily be imported and reused with minimal adaptation for another learning context





# The reusability dilemma





# An eXe reusability example

**Mozilla Firefox**

File Edit View Go Bookmarks Tools Help

File Tools Styles Refresh Help

Add Child Delete Rename

Outline

- Birds of NZ
  - Pukeko

Activity

- Attachment
- Case Study
- Free Text Area
- Image with Text
- Multi-Choice Question
- Objectives
- Preknowledge
- Reading Activity
- Reflection
- Screenshot
- True-False Question
- Wikipedia Article

**Pukeko**

**Objectives**

At the end of this session you should be able to identify a Pukeko and describe its habitat.

**Purple Swamphen**

From Wikipedia, the free encyclopedia.

The **Purple Swamphen** (*Porphyrio porphyrio*), also known as the **Purple Gallinule** or **Pukeko**, is a large bird in the family Rallidae.

Their breeding habitat is warm reedbeds across southernmost Europe, Africa, tropical Asia, and Australasia. There are six or more subspecies, depending on the authority, which differ in the plumage colours.

The races are; *P. p. porphyrio* in Europe, *P. p. madagascariensis* in Africa, *P. p. poliocephalus*, in tropical Asia, *P. p. melanotus* in much of Australasia, *P. p. indicus* in Indonesia and *P. p. pulverulentis* in the Philippines.

Purple Swamphens are considered to be the ancestors of several island species including the extinct Lord Howe Swamphen and New Zealand's Takahe. In spite of being the ancestor of the Takahe no swamphens lived in New Zealand prior to the arrival of humans. The near extinction of the Takahe left the niche open and the Purple Swamphens colonised the islands for the second time.

The Purple Swamphen is called *Pukeko* by the indigenous Maori people. The early European settlers referred to it simply as a swamphen.

European birds are overall purple-blue, African and south Asian birds have a green back, and Australasian and Indonesian birds have black backs and heads. The Philippines subspecies is pale blue with a brown back.

**Purple Swamphen**  
Conservation status: Lower risk (lc)

**Purple Swamphen**  
Scientific classification

**Purple Swamphen**  
Binomial name

**Multi-Choice Question**

What is the English name for a Pukeko

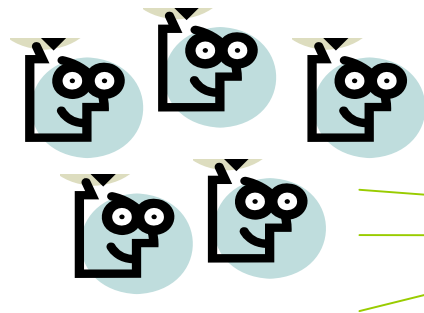
- ☐ Chicken
- ☐ Swamphen

Customised Learning objectives

Open Content Wikipedia article

Customised questions

# eXe's open content initiative

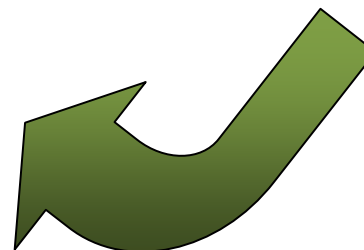
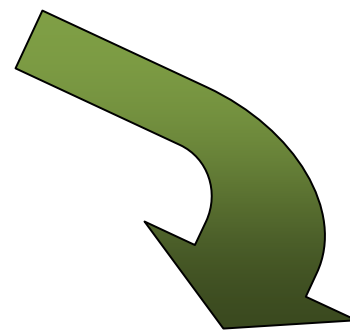


LMS



.elp file

Customise content with eXe  
iDevices





# www.exelearning.org

exelearning | eLearning XHTML editor - Mozilla Firefox

File Edit View Go Bookmarks Tools Help

http://exelearning.org/

Go

Customize Links Free Hotmail my del.icio.us post to del.icio.us Google Calendar Gmail - Inbox (2) AUT AUT University - AUT HOME - Slingshot:: I... Novell WebAccess

search

About Downloads Support Community Developers

Navigation

- Home

## Get eXe

The eXe project is developing an off-line authoring environment to assist teachers and academics in the publishing of web content without the need to become proficient in HTML or XML markup. The project is funded by a grant from the [Tertiary Education Commission](#) of New Zealand and is led by the [Auckland University of Technology](#) and [Tairāwhiti Polytechnic](#).

Download eXe for Windows  
[eXe-install-0.15.exe](#)

Other eXe files are available on [Eduforge](#) or [Sourceforge](#) or from our [Downloads](#) page.

If you are using eXe please take a moment to complete our short [survey](#).

.....

eXe is seeking to hire a **Python developer**. Full job description available here:  
[http://www.aut.ac.nz/staff/current\\_vacancies/](http://www.aut.ac.nz/staff/current_vacancies/)

eXe

[Screenshots](#)

©2006 eXe | [exe@exelearning.org](mailto:exe@exelearning.org)